



Metal that works

Industrial shelving systems since 1954

2020 Product Catalog

Strength • Support • Integrity



METALWARE

/ TABLE OF CONTENTS

Interlok	6
Shelves.....	7
Posts & End Panels.....	9
Back Panels.....	12
Bracing & Gussets.....	13
Finishing Panels	14
Dividers	15
Base Plates & Bin Fronts	17
Additional Shelving Accessories	18
Hardware.....	20
E-Series Widespan	21
Posts & Frame Connectors	22
Beams.....	23
Tie Bars	24
Shelves.....	25
Hardware & Accessories	26
Integrated Modular Drawers	27
18" x 36"	28
24" x 36"	29
18" x 48"	30
24" x 48"	31
Adaptors.....	32
Separators	32
Drop-In Dividers	33
Multi-Level & High-Bay Solutions	35
Made with Interlok	36
Made with E-Series Widespan	37
Products for Multi-Level & High-Bay Systems	38
Slotted Angle Bolted Shelving	39
Color Options Available.....	41
Terms & Conditions	42

/ How we stack up

Metalware is among **North America's** leading industrial shelving manufacturers.

As the first company to patent and market No-Bolt shelving, we pride ourselves in always being one step ahead of our competition through innovative technologies, adaptive solutions, competitive prices and unparalleled customer service.

Bottom line — we've been setting the bar for industrial shelving for over 65 years.

We are real people who know the value of a job well done. We love what we do, and it shows.

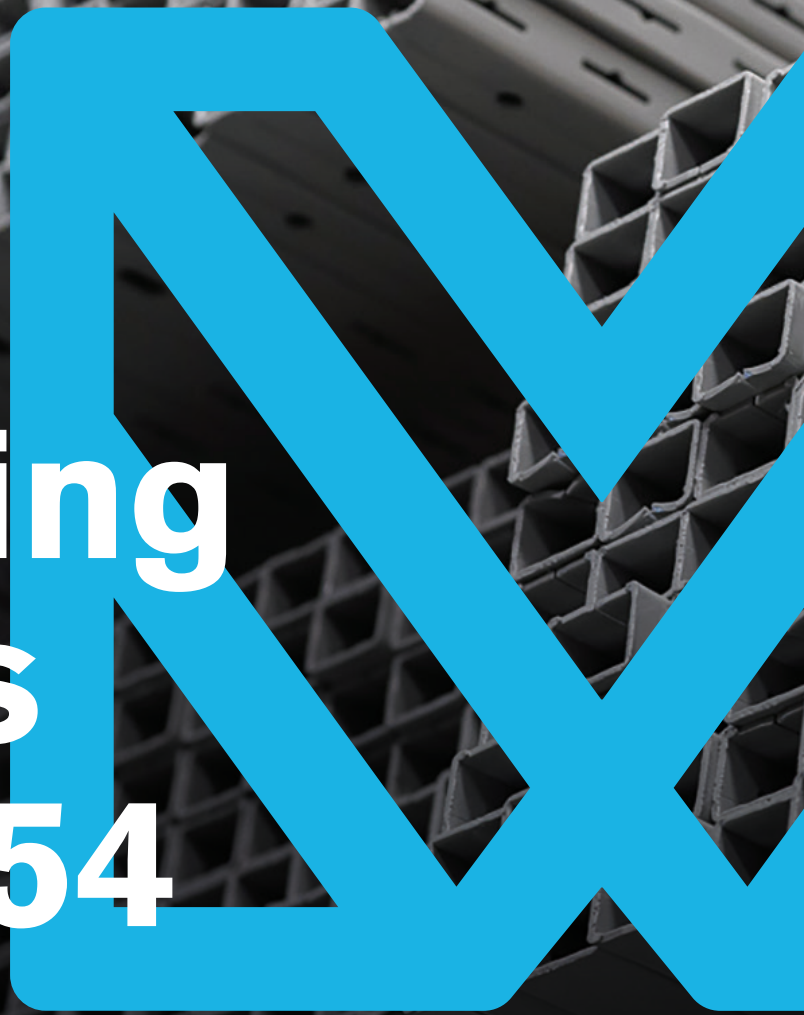
From conception to delivery, our team supports you every step of the way by helping manage your project and ensuring that your client is only receiving the best. Our unwavering dedication is one of our biggest strengths, and we put it to good use. Work with us, and we'll bring to fruition any -and all- of your client's needs.

The Metalware advantage

These core principles define us because we love what we do. From conceptualization, through production, right down to delivery, we trust in the strength and integrity of our products and our processes.

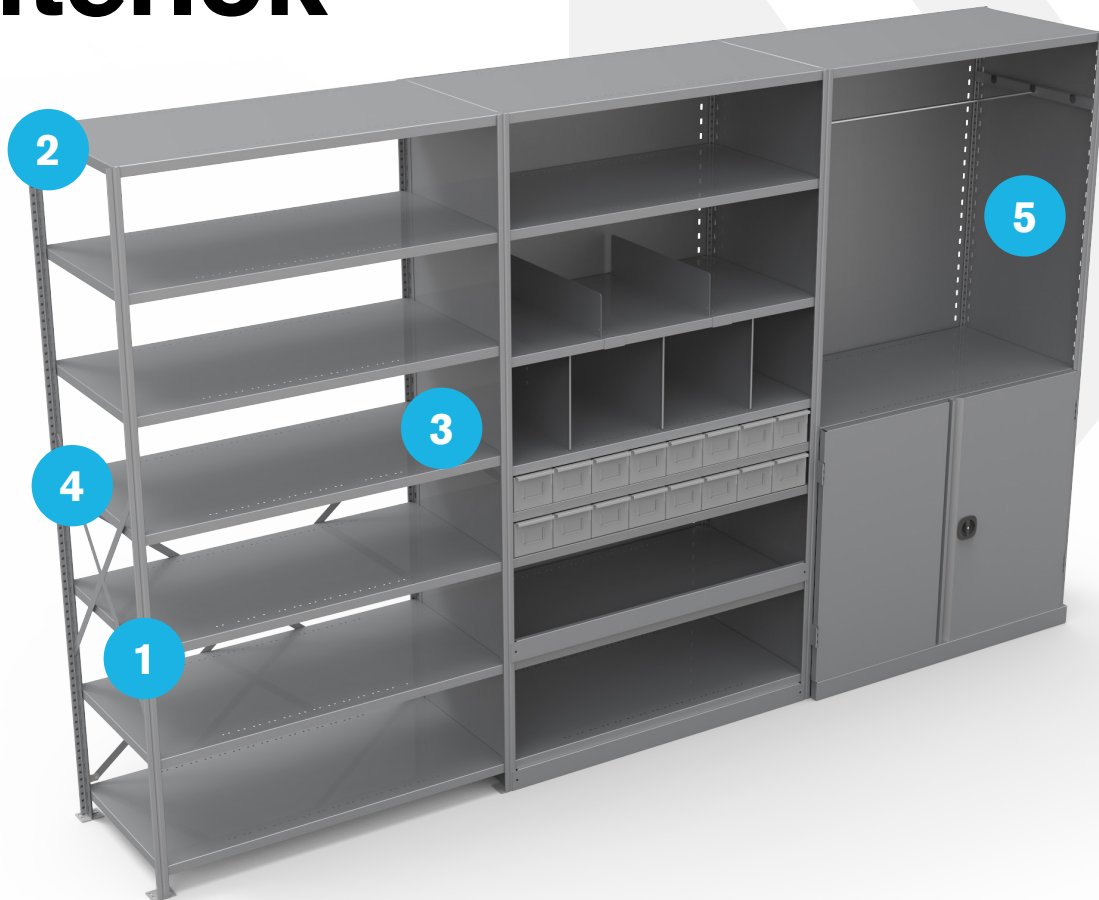
Finding the right storage solution for your clients is our absolute top priority. Our team of storage solution specialists supports you, and works with you from start to finish, to develop ideas, design layouts and implement custom storage solutions to help take your client's businesses to the next level.

**Supporting
business
since 1954**



06

/ Interlok



/ Features



1. 16 GA T-post welded on 4" centers



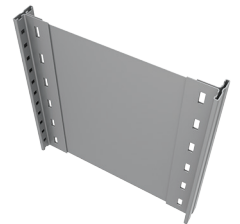
2. Splice bracket



3. 20 GA lapped + locked, welded box shelf



4. 1" and 2" shelf clips



5. End panel with a welded T-post

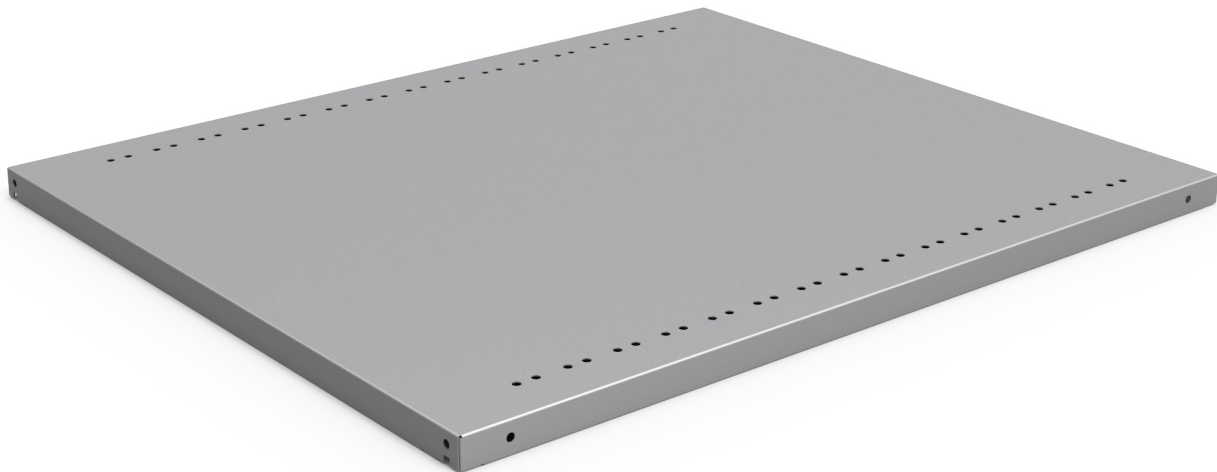
Strength, durability and cost-effectiveness are the names of the game with the Interlok. This versatile 'No-Bolt' shelving system, produced in either 18 or 20 gauge cold-rolled steel, is designed to keep quality high and costs low by reducing nuts, bolts and other tools from the assembly process.

Its efficient design requires no additional floor space during assembly and allows for easy rearrangement without dismantling. In addition, a multitude of accessories are available for this product line.

/ Shelves

20ga STANDARD BOX SHELVES	STEEL GAUGE	WEIGHT (LBS)	CODE	QTY/ BOX	QTY / SKID
12" deep x 36" wide	20 gauge	7.75	IBS1236_	16	208
15" deep x 36" wide	20 gauge	9.00	IBS1536_	10	160
18" deep x 36" wide	20 gauge	10.00	IBS1836_	10	160
24" deep x 36" wide	20 gauge	12.50	IBS2436_	8	104
30" deep x 36" wide	20 gauge	14.85	IBS3036_	8	80
12" deep x 42" wide	20 gauge	8.75	IBS1242_	16	208
15" deep x 42" wide	20 gauge	10.25	IBS1542_	10	160
16" deep x 42" wide	20 gauge	10.75	IBS1642_	10	160
18" deep x 42" wide	20 gauge	11.75	IBS1842_	10	160
24" deep x 42" wide	20 gauge	14.50	IBS2442_	8	104
30" deep x 42" wide	20 gauge	17.14	IBS3042_	8	80
32" deep x 42" wide	20 gauge	18.08	IBS3242_	* S/Q	50
12" deep x 48" wide	20 gauge	10.00	IBS1248_	16	208
15" deep x 48" wide	20 gauge	11.50	IBS1548_	10	160
18" deep x 48" wide	20 gauge	13.25	IBS1848_	10	160
24" deep x 48" wide	20 gauge	16.50	IBS2448_	8	104
30" deep x 48" wide	20 gauge	19.42	IBS3048_	* S/Q	50

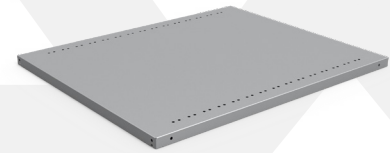
* S/Q denotes that shelves must be ordered with a minimum of 1 skid order quantity
 All shelves must be ordered by box quantities only
 Shelf clips included



08

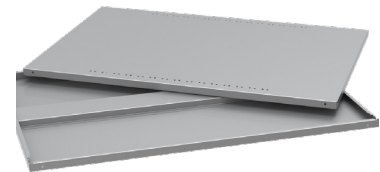
/ Shelves

20ga LIGHT DUTY SHELVES	STEEL GAUGE	WEIGHT (LBS)	CODE	QTY/ BOX	QTY/ SKID
12" deep x 36" wide	20 gauge	6.04	20GA-S1236_	16	208
15" deep x 36" wide	20 gauge	7.26	20GA-S1536_	10	160
18" deep x 36" wide	20 gauge	8.48	20GA-S1836_	10	160
24" deep x 36" wide	20 gauge	10.92	20GA-S2436_	8	104
12" deep x 42" wide	20 gauge	6.97	20GA-S1242_	16	208
15" deep x 42" wide	20 gauge	8.38	20GA-S1542_	10	160
18" deep x 42" wide	20 gauge	9.79	20GA-S1842_	10	160
24" deep x 42" wide	20 gauge	12.60	20GA-S2442_	8	104
12" deep x 48" wide	20 gauge	7.90	20GA-S1248_	16	208
15" deep x 48" wide	20 gauge	9.50	20GA-S1548_	10	160
18" deep x 48" wide	20 gauge	11.09	20GA-S1848_	10	160
24" deep x 48" wide	20 gauge	14.28	20GA-S2448_	8	104



**All shelves must be ordered by box quantities only
Minimum order quantity of 1 skid**

20ga HEAVY DUTY REINFORCED BOX SHELVES	STEEL GAUGE	WEIGHT (LBS)	CODE	QTY/ BOX	QTY/ SKID
12" deep x 36" wide	20 gauge	10.17	HD-IBS1236_	16	208
15" deep x 36" wide	20 gauge	11.38	HD-IBS1536_	10	160
18" deep x 36" wide	20 gauge	12.60	HD-IBS1836_	10	160
24" deep x 36" wide	20 gauge	15.04	HD-IBS2436_	8	104
30" deep x 36" wide	20 gauge	17.48	HD-IBS3036_	8	80
12" deep x 42" wide	20 gauge	11.76	HD-IBS1242_	16	208
15" deep x 42" wide	20 gauge	13.17	HD-IBS1542_	10	160
18" deep x 42" wide	20 gauge	14.58	HD-IBS1842_	10	160
24" deep x 42" wide	20 gauge	17.39	HD-IBS2442_	8	104
30" deep x 42" wide	20 gauge	20.20	HD-IBS3042_	8	80
12" deep x 48" wide	20 gauge	13.36	HD-IBS1248_	16	208
15" deep x 48" wide	20 gauge	14.96	HD-IBS1548_	10	160
18" deep x 48" wide	20 gauge	16.55	HD-IBS1848_	10	160
24" deep x 48" wide	20 gauge	19.74	HD-IBS2448_	8	104
30" deep x 48" wide	20 gauge	22.92	HD-IBS3048_	N/A	50
36" deep x 48" wide	20 gauge	26.11	HD-IBS3648_	N/A	50



**All shelves must be ordered by box quantities only
Minimum order quantity of 1 skid**

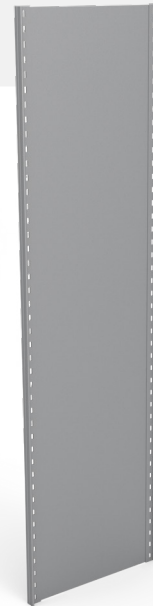
/ Posts & End Panels

POSTS	STEEL GAUGE	WEIGHT (LBS)	CODE	QTY PER SKID
3'4" high	16 gauge	4.00	P40_	250
4'4" high	16 gauge	5.50	P52_	250
5'4" high	16 gauge	6.75	P64_	250
6'4" high	16 gauge	8.00	P76_	250
7'4" high	16 gauge	9.20	P88_	250
8'4" high	16 gauge	10.40	P100_	250
9'4" high	16 gauge	11.70	P112_	250
10'4" high	16 gauge	12.90	P124_	250
11'4" high *	16 gauge	14.20	P136_	250
12'4" high *	16 gauge	15.40	P148_	250

* Minimum order quantity of 100 pieces

END PANELS *	STEEL GAUGE (Sheet panel only)	WEIGHT (LBS)	CODE	QTY PER SKID
12" deep x 3'4" high	24 gauge	10.5	EP1240_	40
12" deep x 4'4" high	24 gauge	15.33	EP1252_	40
12" deep x 5'4" high	24 gauge	18.83	EP1264_	40
12" deep x 6'4" high	24 gauge	20.75	EP1276_	40
12" deep x 7'4" high	24 gauge	23.5	EP1288_	40
12" deep x 8'4" high	24 gauge	26.25	EP12100_	21
12" deep x 9'4" high	24 gauge	29.5	EP12112_	21
12" deep x 10'4" high	24 gauge	32.75	EP12124_	21
12" deep x 11'4" high	24 gauge	39.73	EP12136_	21
12" deep x 12'4" high	24 gauge	43.13	EP12148_	21
15" deep x 3'4" high	24 gauge	11.5	EP1540_	40
15" deep x 4'4" high	24 gauge	16.42	EP1552_	40
15" deep x 5'4" high	24 gauge	20.17	EP1564_	40
15" deep x 6'4" high	24 gauge	22.5	EP1576_	40
15" deep x 7'4" high	24 gauge	25.5	EP1588_	40
15" deep x 8'4" high	24 gauge	32.4	EP15100_	21
15" deep x 9'4" high	24 gauge	32.4	EP15112_	21
15" deep x 10'4" high	24 gauge	36	EP15124_	21
15" deep x 11'4" high	24 gauge	42.57	EP15136_	21
15" deep x 12'4" high	24 gauge	46.22	EP15148_	21

Continued...

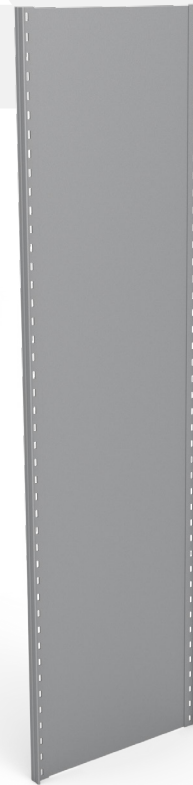


10

/ Posts & End Panels

END PANELS * (Continued)	STEEL GAUGE (Sheet panel only)	WEIGHT (LBS)	CODE	QTY PER SKID
16" deep x 3'4" high	24 gauge	12.44	EP1640_	40
16" deep x 4'4" high	24 gauge	16.78	EP1652_	40
16" deep x 5'4" high	24 gauge	20.61	EP1664_	40
16" deep x 6'4" high	24 gauge	24.44	EP1676_	40
16" deep x 7'4" high	24 gauge	28.18	EP1688_	40
16" deep x 8'4" high	24 gauge	31.91	EP16100_	21
16" deep x 9'4" high	24 gauge	35.84	EP16112_	21
16" deep x 10'4" high	24 gauge	39.58	EP16124_	21
16" deep x 11'4" high	24 gauge	43.51	EP16136_	21
16" deep x 12'4" high	24 gauge	47.24	EP16148_	21
18" deep x 3'4" high	24 gauge	12	EP1840_	40
18" deep x 4'4" high	24 gauge	17.50	EP1852_	40
18" deep x 5'4" high	24 gauge	21.50	EP1864_	40
18" deep x 6'4" high	24 gauge	24	EP1876_	40
18" deep x 7'4" high	24 gauge	27	EP1888_	40
18" deep x 8'4" high	24 gauge	30.5	EP18100_	21
18" deep x 9'4" high	24 gauge	34.3	EP18112_	21
18" deep x 10'4" high	24 gauge	38.2	EP18124_	21
18" deep x 11'4" high	24 gauge	45.40	EP18136_	21
18" deep x 12'4" high	24 gauge	49.30	EP18148_	21
24" deep x 3'4" high	24 gauge	14	EP2440_	40
24" deep x 4'4" high	24 gauge	19.67	EP2452_	40
24" deep x 5'4" high	24 gauge	24.17	EP2464_	40
24" deep x 6'4" high	24 gauge	27	EP2476_	40
24" deep x 7'4" high	24 gauge	31	EP2488_	40
24" deep x 8'4" high	24 gauge	34.5	EP24100_	21
24" deep x 9'4" high	24 gauge	38.8	EP24112_	21
24" deep x 10'4" high	24 gauge	43.1	EP24124_	21
24" deep x 11'4" high	24 gauge	51.07	EP24136_	21
24" deep x 12'4" high	24 gauge	55.47	EP24148_	21

Continued...



/ Posts & End Panels

END PANELS * (Continued)	STEEL GAUGE (Sheet panel only)	WEIGHT (LBS)	CODE	QTY PER SKID
30" deep x 3'4" high	24 gauge	15.5	EP3040_	40
30" deep x 4'4" high	24 gauge	21.83	EP3052_	40
30" deep x 5'4" high	24 gauge	26.83	EP3064_	40
30" deep x 6'4" high	24 gauge	30.25	EP3076_	40
30" deep x 7'4" high	24 gauge	34.5	EP3088_	40
30" deep x 8'4" high	24 gauge	38.75	EP30100_	21
30" deep x 9'4" high	24 gauge	46.73	EP30112_	21
30" deep x 10'4" high	24 gauge	51.63	EP30124_	21
30" deep x 11'4" high	24 gauge	56.73	EP30136_	21
30" deep x 12'4" high	24 gauge	61.63	EP30148_	21
32" deep x 3'4" high	24 gauge	16.89	EP3240_	40
32" deep x 4'4" high	24 gauge	22.56	EP3252_	40
32" deep x 5'4" high	24 gauge	27.72	EP3264_	40
32" deep x 6'4" high	24 gauge	32.89	EP3276_	40
32" deep x 7'4" high	24 gauge	37.96	EP3288_	40
32" deep x 8'4" high	24 gauge	43.02	EP32100_	21
32" deep x 9'4" high	24 gauge	48.29	EP32112_	21
32" deep x 10'4" high	24 gauge	53.36	EP32124_	21
32" deep x 11'4" high	24 gauge	58.62	EP32136_	21
32" deep x 12'4" high	24 gauge	63.69	EP32148_	21
36" deep x 3'4" high	24 gauge	18.00	EP3640_	40
36" deep x 4'4" high	24 gauge	24.00	EP3652_	40
36" deep x 5'4" high	24 gauge	29.50	EP3664_	40
36" deep x 6'4" high	24 gauge	35.00	EP3676_	40
36" deep x 7'4" high	24 gauge	40.40	EP3688_	40
36" deep x 8'4" high	24 gauge	45.80	EP36100_	21
36" deep x 9'4" high	24 gauge	51.40	EP36112_	21
36" deep x 10'4" high	24 gauge	56.80	EP36124_	21
36" deep x 11'4" high	24 gauge	62.40	EP36136_	21
36" deep x 12'4" high	24 gauge	67.80	EP36148_	21

Note regarding custom height:

- 4" increments only

- price is equivalent to the next following, greater standard-measurement price (eg. custom 30" deep x 10'8" price = standard 30" deep x 11'4" price)

- minimum order quantity for odd-number heights = 10 pcs

* An end panel is made by welding 2 16ga posts to a sheet panel



12




/ Back Panels

BACK PANELS	STEEL GAUGE	WEIGHT (LBS)	CODE
36" wide x 3'4" high	24 gauge	10.00	BP3640_
36" wide x 4'4" high	24 gauge	13.00	BP3652_
42" wide x 3'4" high	24 gauge	11.67	BP4240_
42" wide x 4'4" high	24 gauge	15.17	BP4252_
48" wide x 3'4" high	24 gauge	13.33	BP4840_
48" wide x 4'4" high	24 gauge	17.33	BP4852_
36" wide x 6'4" high	24 gauge	20.00	BP3676_
36" wide x 7'4" high	24 gauge	23.00	BP3688_
36" wide x 8'4" high	24 gauge	26.00	BP36100_
36" wide x 9'4" high	24 gauge	30.00	BP36112_
36" wide x 10'4" high	24 gauge	33.00	BP36124_
36" wide x 11'4" high	24 gauge	36.00	BP36136_
36" wide x 12'4" high	24 gauge	39.00	BP36148_
42" wide x 6'4" high	24 gauge	23.33	BP4276_
42" wide x 7'4" high	24 gauge	26.83	BP4288_
42" wide x 8'4" high	24 gauge	30.33	BP42100_
42" wide x 9'4" high	24 gauge	35.00	BP42112_
42" wide x 10'4" high	24 gauge	38.50	BP42124_
42" wide x 11'4" high	24 gauge	42.00	BP42136_
42" wide x 12'4" high	24 gauge	45.50	BP42148_
48" wide x 6'4" high	24 gauge	26.67	BP4876_
48" wide x 7'4" high	24 gauge	30.67	BP4888_
48" wide x 8'4" high	24 gauge	34.67	BP48100_
48" wide x 9'4" high	24 gauge	40.00	BP48112_
48" wide x 10'4" high	24 gauge	44.00	BP48124_
48" wide x 11'4" high	24 gauge	48.00	BP48136_
48" wide x 12'4" high	24 gauge	52.00	BP48148_

Hardware included



/ Bracing & Gussets

BRACING	STEEL GAUGE	WEIGHT (LBS)	CODE	QTY PER SKID	
Back sway braces (per pair)	11 gauge	4	BB_	250	
Side sway braces (per pair)	11 gauge	2	SB_	250	
Side sway braces 43" (per pair) 16" & 32" deep shelving	11 gauge	2	SB43_	250	
Side sway braces 48" (per pair) 30" & 36" deep shelving	11 gauge	2	SB48_	250	
Gussets (per pair)	12 gauge	1	G_	N/A	

Hardware Included

14

/ Finishing Panels

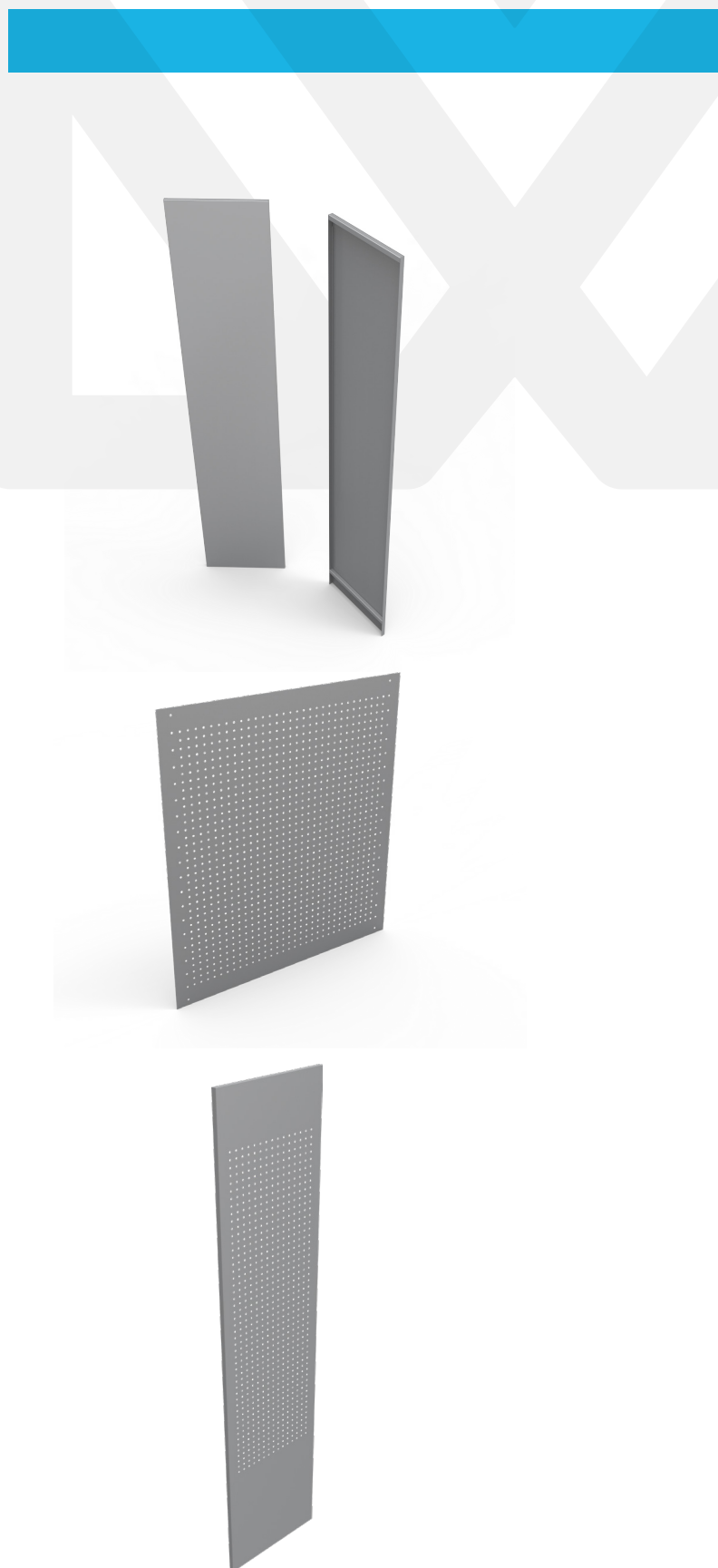
DECORATIVE END PANELS	STEEL GAUGE	WEIGHT (LBS)	CODE
12" deep x 40" high	20 gauge	6.75	DEP1240_
12" deep x 76" high	20 gauge	12.5	DEP1276_
12" deep x 88" high	20 gauge	14.5	DEP1288_
15" deep x 40" high	20 gauge	9	DEP1540_
15" deep x 76" high	20 gauge	17	DEP1576_
15" deep x 88" high	20 gauge	20	DEP1588_
18" deep x 40" high	20 gauge	10.5	DEP1840_
18" deep x 76" high	20 gauge	20	DEP1876_
18" deep x 88" high	20 gauge	23	DEP1888_
24" deep x 40" high	20 gauge	14	DEP2440_
24" deep x 76" high	20 gauge	26	DEP2476_
24" deep x 88" high	20 gauge	30.5	DEP2488_

PERFORATED BACK PANELS	STEEL GAUGE	WEIGHT (LBS)	CODE
36" wide x 3'4" high	18 gauge	10.0	PBP3640_
36" wide x 4'4" high	18 gauge	13.0	PBP3652_
42" wide x 3'4" high	18 gauge	11.7	PBP4240_
42" wide x 4'4" high	18 gauge	15.2	PBP4252_
48" wide x 3'4" high	18 gauge	13.3	PBP4840_
48" wide x 4'4" high	18 gauge	17.3	PBP4852_

Hardware included. Minimum order quantity of 10 pcs.

PERFORATED DECORATIVE END PANELS	STEEL GAUGE	WEIGHT (LBS)	CODE
12" deep x 40" high	18 gauge	12.50	DEPB1240_
12" deep x 76" high	18 gauge	14.50	DEPB1276_
12" deep x 88" high	18 gauge	18.23	DEPB1288_
15" deep x 40" high	18 gauge	17.00	DEPB1540_
15" deep x 76" high	18 gauge	20.00	DEPB1576_
15" deep x 88" high	18 gauge	22.00	DEPB1588_
18" deep x 40" high	18 gauge	20.00	DEPB1840_
18" deep x 76" high	18 gauge	23.00	DEPB1876_
18" deep x 88" high	18 gauge	25.77	DEPB1888_
24" deep x 40" high	18 gauge	26.00	DEPB2440_
24" deep x 76" high	18 gauge	30.50	DEPB2476_
24" deep x 88" high	18 gauge	33.31	DEPB2488_

Hardware included. Minimum order quantity of 5 pcs.



/ Dividers

DIVIDERS	STEEL GAUGE	WEIGHT (LBS)	CODE
6" high x 12" deep	24 gauge	1.00	D612_
8" high x 12" deep	24 gauge	1.25	D812_
10" high x 12" deep	24 gauge	1.45	D1012_
12" high x 12" deep	24 gauge	1.65	D1212_
14" high x 12" deep	24 gauge	1.95	D1412_
16" high x 12" deep	24 gauge	2.25	D1612_
18" high x 12" deep	24 gauge	2.45	D1812_
20" high x 12" deep	24 gauge	2.75	D2012_
22" high x 12" deep	24 gauge	3.00	D2212_
24" high x 12" deep	24 gauge	3.25	D2412_
6" high x 15" deep	24 gauge	1.15	D615_
8" high x 15" deep	24 gauge	1.50	D815_
10" high x 15" deep	24 gauge	1.75	D1015_
12" high x 15" deep	24 gauge	2.15	D1215_
14" high x 15" deep	24 gauge	2.45	D1415_
16" high x 15" deep	24 gauge	2.75	D1615_
18" high x 15" deep	24 gauge	3.00	D1815_
20" high x 15" deep	24 gauge	3.35	D2015_
22" high x 15" deep	24 gauge	3.50	D2215_
24" high x 15" deep	24 gauge	3.75	D2415_
6" high x 18" deep	24 gauge	1.50	D618_
8" high x 18" deep	24 gauge	1.75	D818_
10" high x 18" deep	24 gauge	2.15	D1018_
12" high x 18" deep	24 gauge	2.55	D1218_
14" high x 18" deep	24 gauge	2.95	D1418_
16" high x 18" deep	24 gauge	3.25	D1618_
18" high x 18" deep	24 gauge	3.65	D1818_
20" high x 18" deep	24 gauge	4.00	D2018_
22" high x 18" deep	24 gauge	4.30	D2218_
24" high x 18" deep	24 gauge	4.75	D2418_
6" high x 24" deep	24 gauge	1.88	D624_
8" high x 24" deep	24 gauge	2.40	D824_
10" high x 24" deep	24 gauge	2.88	D1024_
12" high x 24" deep	24 gauge	3.40	D1224_
14" high x 24" deep	24 gauge	3.88	D1424_
16" high x 24" deep	24 gauge	4.40	D1624_
18" high x 24" deep	24 gauge	4.88	D1824_

Continued...



16

/ Dividers

DIVIDERS (Continued)	STEEL GAUGE	WEIGHT (LBS)	CODE
20" high x 24" deep	24 gauge	5.40	D2024_
22" high x 24" deep	24 gauge	5.90	D2224_
24" high x 24" deep	24 gauge	6.40	D2424_
6" high x 30" deep	24 gauge	2.81	D630_
8" high x 30" deep	24 gauge	3.44	D830_
10" high x 30" deep	24 gauge	4.06	D1030_
12" high x 30" deep	24 gauge	4.69	D1230_
14" high x 30" deep	24 gauge	5.31	D1430_
16" high x 30" deep	24 gauge	5.94	D1630_
18" high x 30" deep	24 gauge	6.56	D1830_
20" high x 30" deep	24 gauge	7.19	D2030_
22" high x 30" deep	24 gauge	7.81	D2230_
24" high x 30" deep	24 gauge	8.44	D2430_

Hardware included

Custom measurements by height available

Note regarding custom height :

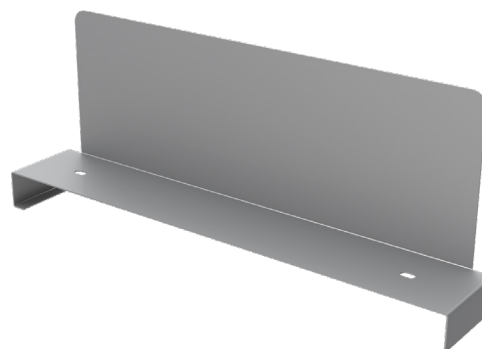
- odd-number height measurements only
- price is equivalent to the next following, greater even-numbered price (eg. custom 17" height x 24" deep price = standard 18" height x 24" deep price)
- minimum order quantity for odd-number heights = 100 pcs

SLIDING DIVIDERS	STEEL GAUGE	WEIGHT (LBS)	CODE
6" high x 12" wide	18 gauge	1.25	DC612_
8" high x 12" wide	18 gauge	1.5	DC812_
6" high x 15" wide	18 gauge	2	DC615_
8" high x 15" wide	18 gauge	2.25	DC815_
6" high x 18" wide	18 gauge	2.75	DC618_
8" high x 18" wide	18 gauge	3	DC818_
6" high x 24" wide	18 gauge	3.5	DC624_
8" high x 24" wide	18 gauge	3.75	DC824_

Hardware included

HALF DIVIDERS	STEEL GAUGE	WEIGHT (LBS)	CODE
6" high x 12" deep	18 gauge	0.85	D612-DEMI_
6" high x 15" deep	18 gauge	1	D615-DEMI_
6" high x 18" deep	18 gauge	1.3	D618-DEMI_
6" high x 24" deep	18 gauge	1.75	D624-DEMI_

Hardware included



/ Base plates & Bin Fronts

BASE PLATES	STEEL GAUGE	WEIGHT (LBS)	CODE
3" high x 36" wide	20 gauge	2	BP36_
3" high x 42" wide	20 gauge	2.25	BP42_
3" high x 48" wide	20 gauge	2.5	BP48_

Hardware included

BIN FRONTS	STEEL GAUGE	WEIGHT (LBS)	CODE
3" high x 36" wide	20 gauge	2	BP36_
3" high x 42" wide	20 gauge	2.25	BP42_
3" high x 48" wide	20 gauge	2.5	BP48_
1" deep x 36" wide	20 gauge	2	BF136_
2" deep x 36" wide	20 gauge	2.25	BF236_
1" deep x 42" wide	20 gauge	2.4	BF142_
2" deep x 42" wide	20 gauge	2.65	BF242_
2" deep x 48" wide	20 gauge	3	BF248_

Hardware included



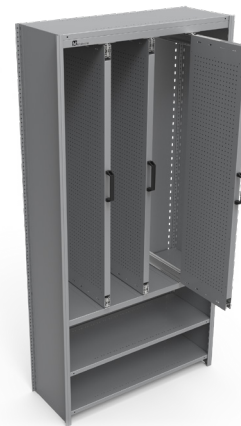
/ Additional Shelving Accessories

HANGING BARS & BRACKETS (sold individually)	WEIGHT (LBS)	CODE
Pipe (hanging bar) 1" x 36" long	3.1	HB136_
Pipe (hanging bar) 1" x 42" long	3.6	HB142_
Pipe (hanging bar) 1" x 48" long	4.1	HB148_
Hanging bar mounting bracket 12" deep	4	HMB12_
Hanging bar mounting bracket 15" deep	4.5	HMB15_
Hanging bar mounting bracket 18" deep	5	HMB18_
Hanging bar mounting bracket 24" deep	5.5	HMB24_
Hanging bar mounting bracket 30" deep	6.5	HMB30_



Hardware included

SLIDE OUT PEGBOARD & SUPPORTING SHELF	WEIGHT (LBS)	CODE
Slide out pegboard 18" deep x 40" high	24.00	SPB1840_
Slide out pegboard 18" deep x 60" high	34.50	SPB1860_
Slide out pegboard 24" deep x 40" high	33.00	SPB2440_
Slide out pegboard 24" deep x 60" high	45.00	SPB2460_
Supporting shelf 18" deep x 36" wide	25.50	SS1836_
Supporting shelf 18" deep x 48" wide	34.00	SS1848_
Supporting shelf 24" deep x 36" wide	34.00	SS2436_
Supporting shelf 24" deep x 48" wide	45.75	SS2448_



Note :

- a pair of 36" shelves is required to support 2 slide-out pegboards
- a pair of 48" shelves is required to support 3 slide-out pegboards
- hardware included

BOLTED SHELF REINFORCEMENTS	WEIGHT (LBS)	CODE
36" long (each) galvanized	1	SR36
42" long (each) galvanized	1.25	SR42
48" long (each) galvanized	1.5	SR48



Hardware included

SWINGING DOORS	WEIGHT (LBS)	CODE
36" wide x 3'4" high	30	DK3640_
36" wide x 6'4" high	43	DK3676_
36" wide x 7'4" high	55	DK3688_
48" wide x 3'4" high	40	DK4840_
48" wide x 6'4" high	58	DK4876_
48" wide x 7'4" high	67	DK4888_



Hardware included

/ Additional Shelving Accessories

WORKSTATIONS : BOLTED BEAMS, TIE BARS & DROP-IN PANELS	WEIGHT (LBS)	CODE
96" bolted beam	12.00	BH96_
12" tie bar	1.50	ITB12_
18" tie bar	2.50	ITB18_
24" tie bar	4.00	ITB24_
8" wide x 12" deep drop-in panel	1.00	DIS812_
8" wide x 18" deep drop-in panel	1.50	DIS818_
8" wide x 24" deep drop-in panel	2.00	DIS824_
12" horizontal side-brace	2.00	LB12_
18" horizontal side-brace	3.00	LB18_
24" horizontal side-brace	4.00	LB24_
Perforated back panel for workstation 96" wide x 40" high	70	PBP9640_
96" back panel support beams	4	BPS96_
12" deep x 96" wide stainless steel counter top	32.5	SST1296
18" deep x 96" wide stainless steel counter top	45	SST1896
24" deep x 96" wide stainless steel counter top	65	SST2496

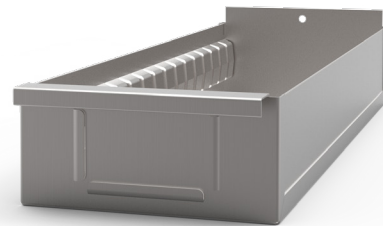
Note :

- bolted beams can be used to create workstations using 40" high shelving
- lateral horizontal braces or endpanels are required with bolted beams
- regular side braces are not suitable for this application











SHELF BOXES	WEIGHT (LBS)	CODE
2 3/4" x 5 5/8" x 12" deep includes 2 dividers	2.5	SB2512_
2 3/4" x 11 5/8" x 12" deep includes 2 dividers	4	SB21112_
4 3/4" x 5 5/8" x 12" deep includes 2 dividers	3.5	SB4512_
4 3/4" x 11 5/8" x 12" deep includes 2 dividers	5	SB41112_
2 3/4" x 5 5/8" x 15" deep includes 2 dividers	3	SB2515_
2 3/4" x 11 5/8" x 15" deep includes 2 dividers	4.5	SB21115_
4 3/4" x 5 5/8" x 15" deep includes 2 dividers	4	SB4515_
2 3/4" x 5 5/8" x 18" deep includes 2 dividers	3.5	SB2518_
4 3/4" x 5 5/8" x 18" deep includes 2 dividers	4.5	SB4518_
4 3/4" x 11 5/8" x 18" deep includes 2 dividers	6	SB41118_

2 dividers included per shelfbox



20

/ Hardware

HARDWARE	CODE	
Plastic label holder 3" wide for standard shelf	SPLH3	
Plastic label holder 3" wide for box shelf	IBSPLH3	
Nuts & bolts 1/4" x 5/8"	XNB5	
2" adjustable shelf clip	XSC	
1" adjustable shelf clip	X1-SC	
Shelf clip (for foot plate)	XSSC	
Back-to-back tie clip	XBBTC	
Divider clip	XDC	

HARDWARE	CODE	
Back panel clip	XBPC	
Base snap	XBS	
Shims 13ga thick, galvanized	SHIMS	
Foot plate 13ga thick, galvanized	FP	
Foot plate 3/16" thick, galvanized	FP-3/16	
Foot plate 5"x4" x 1/4" thick	FP-54.25	
Anchor	ANC	
Mezzanine splice bracket (4 holes)	MSB4	

/ E-Series Widespan



/ Features



1. Frame connectors
up to 4' deep



2. 12 GA roll-formed post



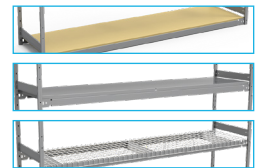
3. Foot plate



4. Beam length
3' - 8' wide



5. Tie bar



6. Wood, steel or wire mesh shelf options

Featuring the best weight capacity of the Metalware storage systems, the E-Series Widespan offers state-of-the-art durability, flexibility and efficiency for all your storage needs. It is a versatile solution, particularly well-suited to industries with a High Volume per SKU ratio (like e-commerce inventory, clothing or automotive parts). It is also ideal for the storage of company records, as well as many other utilities.

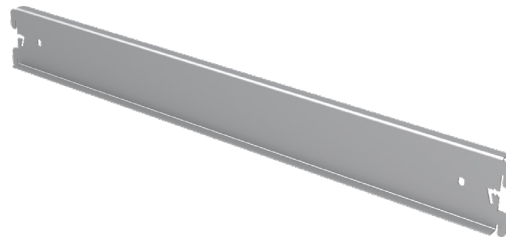
Its fully open system, accessible from all sides, offers a variety of shelf options for every need as well as easy expansion possibilities both in height of width.

/ Posts & Frame Connectors

POST	STEEL GAUGE	WEIGHT (LBS)	CODE
36" high	12 gauge	4.2	WS-PH36_
48" high	12 gauge	5.6	WS-PH48_
60" high	12 gauge	7.0	WS-PH60_
72" high	12 gauge	8.1	WS-PH72_
84" high	12 gauge	9.7	WS-PH84_
96" high	12 gauge	10.9	WS-PH96_
108" high	12 gauge	12.3	WS-PH108_
120" high	12 gauge	13.7	WS-PH120_
144" high	12 gauge	16.4	WS-PH144_



FRAME CONNECTOR	STEEL GAUGE	WEIGHT (LBS)	CODE
12" long	14 gauge	1	WS-FC1212_
15" long	14 gauge	1.2	WS-FC1215_
16" long	14 gauge	1.3	WS-FC1216_
18" long	14 gauge	1.5	WS-FC1218_
24" long	14 gauge	2	WS-FC1224_
30" long	14 gauge	2.4	WS-FC1230_
32" long	14 gauge	2.6	WS-FC1232_
36" long	14 gauge	2.9	WS-FC1236_
42" long	14 gauge	3.4	WS-FC1242_
48" long	14 gauge	3.9	WS-FC1248_



/ Beams

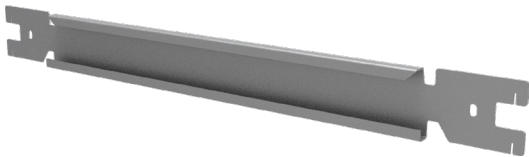
LIGHT BEAM 1"	STEEL GAUGE	WEIGHT (LBS)	CODE
36"	13 gauge	1.9	WS-BL1236_
42"	13 gauge	2.3	WS-BL1239_
48"	13 gauge	2.6	WS-BL1248_

HEAVY BEAM 2"	STEEL GAUGE	WEIGHT (LBS)	CODE
36"	13 gauge	2.9	WS-BH1236_
42"	13 gauge	3.4	WS-BH1242_
48"	13 gauge	3.8	WS-BH1248_
54"	13 gauge	4.3	WS-BH1254_
60"	13 gauge	4.8	WS-BH1260_
66"	13 gauge	5.3	WS-BH1266_
72"	13 gauge	5.7	WS-BH1272_
84" *	13 gauge	8.3	WS-BH1284_
96" **	13 gauge	9.5	WS-BH1296_

* 84" and 96" beams are 2.5", and require triangular tie bars

HEAVY DUTY 3" FLUSH TOP BEAM	STEEL GAUGE	WEIGHT (LBS)	CODE
36"	13 gauge	4.2	WS-BH12363TF_
42"	13 gauge	4.9	WS-BH12423TF_
48"	13 gauge	5.6	WS-BH12483TF_
54"	13 gauge	6.4	WS-BH12543TF_
60"	13 gauge	7	WS-BH12603TF_
66"	13 gauge	7.7	WS-BH12663TF_
72"	13 gauge	8.3	WS-BH12723TF_
84"	13 gauge	9.7	WS-BH12843TF_
96"	13 gauge	11.1	WS-BH12963TF_

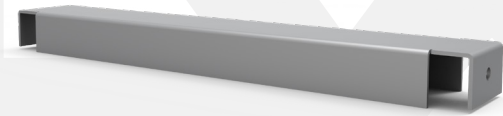
It is necessary to use the specific triangular tie bars for 3" beams



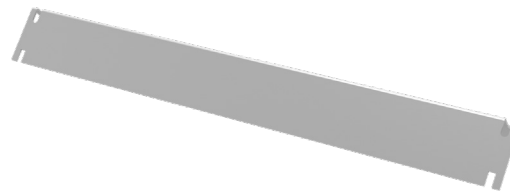
24

/ Tie Bars

REGULAR TIE BAR FOR 2" BEAMS	STEEL GAUGE	WEIGHT (LBS)	CODE
12" long	14 gauge	1.3	WS-TB12_
15" long	14 gauge	1.6	WS-TB15_
16" long	14 gauge	1.6	WS-TB16_
18" long	14 gauge	1.8	WS-TB18_
24" long	14 gauge	2.3	WS-TB24_
30" long	14 gauge	2.8	WS-TB30_
32" long	14 gauge	2.9	WS-TB32_
36" long	14 gauge	3.1	WS-TB36_
42" long	14 gauge	3.6	WS-TB42_
48" long	14 gauge	4.1	WS-TB48_



TRIANGULAR TIE BAR FOR 2.5" BEAMS	STEEL GAUGE	WEIGHT (LBS)	CODE
12" long	14 gauge	1.4	WS-TB12-TRI
15" long	14 gauge	1.7	WS-TB15-TRI
16" long	14 gauge	1.8	WS-TB16-TRI
18" long	14 gauge	2.1	WS-TB18-TRI
24" long	14 gauge	2.8	WS-TB24-TRI
30" long	14 gauge	3.5	WS-TB30-TRI
32" long	14 gauge	3.7	WS-TB32-TRI
36" long	14 gauge	4.1	WS-TB36-TRI
42" long	14 gauge	4.8	WS-TB42-TRI
48" long	14 gauge	5.5	WS-TB48-TRI



TRIANGULAR TIE BAR FOR 3" BEAMS	STEEL GAUGE	WEIGHT (LBS)	CODE
12" long	14 gauge	1.7	WS-TB12-TRI-FT
15" long	14 gauge	2.2	WS-TB15-TRI-FT
16" long	14 gauge	2.3	WS-TB16-TRI-FT
18" long	14 gauge	2.6	WS-TB18-TRI-FT
24" long	14 gauge	3.5	WS-TB24-TRI-FT
30" long	14 gauge	4.3	WS-TB30-TRI-FT
32" long	14 gauge	4.6	WS-TB32-TRI-FT
36" long	14 gauge	5.2	WS-TB36-TRI-FT
42" long	14 gauge	6	WS-TB42-TRI-FT
48" long	14 gauge	6.9	WS-TB48-TRI-FT

/ Shelves

STEEL SHELVES	STEEL GAUGE	WEIGHT (LBS)	CODE
12" deep x 30" wide	20 gauge	14,40	WS-S1230_
12" deep x 36" wide	20 gauge	16,30	WS-S1236_
12" deep x 42" wide	20 gauge	18,30	WS-S1242_
12" deep x 48" wide	20 gauge	20,30	WS-S1248_
15" deep x 30" wide	20 gauge	16,40	WS-S1530_
15" deep x 36" wide	20 gauge	18,80	WS-S1536_
15" deep x 42" wide	20 gauge	21,20	WS-S1542_
15" deep x 48" wide	20 gauge	23,50	WS-S1548_
18" deep x 30" wide	20 gauge	18,50	WS-S1830_
18" deep x 36" wide	20 gauge	21,30	WS-S1836_
18" deep x 42" wide	20 gauge	24,00	WS-S1842_
18" deep x 48" wide	20 gauge	26,80	WS-S1848_
24" deep x 30" wide	20 gauge	22,70	WS-S2430_
24" deep x 36" wide	20 gauge	26,20	WS-S2436_
24" deep x 42" wide	20 gauge	29,80	WS-S2442_
24" deep x 48" wide	20 gauge	33,30	WS-S2448_
30" deep x 30" wide	20 gauge	26,90	WS-S3030_
30" deep x 36" wide	20 gauge	31,20	WS-S3036_
30" deep x 42" wide	20 gauge	39,30	WS-S3042_
30" deep x 48" wide	20 gauge	43,60	WS-S3048_
32" deep x 36" wide	20 gauge	36,60	WS-S3236_
32" deep x 42" wide	20 gauge	41,20	WS-S3242_
32" deep x 48" wide	20 gauge	45,70	WS-S3248_
36" deep x 36" wide	20 gauge	39,90	WS-S3636_
36" deep x 42" wide	20 gauge	45,00	WS-S3642_
36" deep x 48" wide	20 gauge	50,10	WS-S3648_


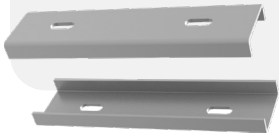



SHELVING OPTIONS - AVAILABLE ON REQUEST

WOOD SHELVES - particle board 5/8" cut to nominal dimensions

WIRE MESH - waterfall or flat wire mesh available (minimum order quantity of 50 pcs)

/ Hardware & Accessories

HARDWARE & ACCESSORIES	WEIGHT (LBS)	CODE	
Foot plate	0.40	WS-FP	
Shim	0.30	WS-SHIMS	
Splice bracket	0.70	WS-MSB4	
Anchor	0.05	ANC	
Hanging bar mounting bracket 12"		WS-MB12_	
Hanging bar mounting bracket 18"		WS-MB18_	
Hanging bar mounting bracket 24"		WS-MB24_	
Hanging bar mounting bracket 30"		WS-MB30_	
Hanging bar mounting bracket 36"		WS-MB36_	
Hanging bar 36"		WS-HB36_	
Hanging bar 48"		WS-HB48_	
Hanging bar 60"		WS-HB60_	
Hanging bar 72"		WS-HB72_	
Hanging bar 96"		WS-HB96_	

/ Integrated Modular Drawers

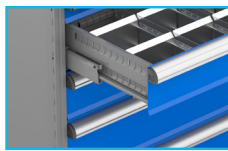


/ Features



1. Compatible

Fully compatible and adjustable with all Interlok and E-Series Widespan units



2. *Deep Compartment Drawer Design

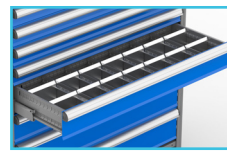
Avoid spillage, drawer sides and dividers are flush with the top of the drawer-front

*NB: An 8" drawer front has a full 7" usable storage



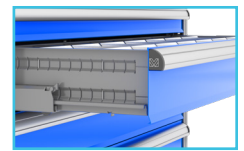
3. Ergonomic Design

Non-slip, rounded ergonomic handle for a secure hold and no risk of cuts



4. Drop-in Dividers

Each drawer includes drop-in dividers offered in a variety of configurations to optimize your storage



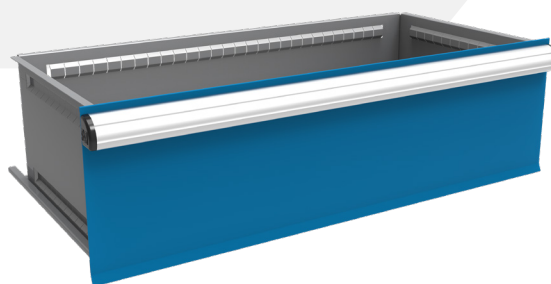
5. Full Extension

Complete extension for easy viewing and with 450 lbs capacity per drawer

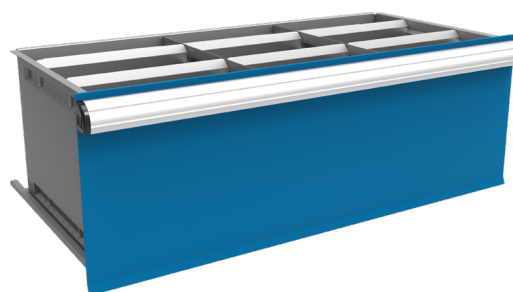
Metalware is proud to introduce the newest product: The Integrated Modular Drawer. Saving more space and providing ease of access has never been easier. This drawer system answers a wide range of storage needs while occupying a smaller footprint. Made of superior 18 GA steel and built to last.

/ Integrated Modular Drawer / 18" x 36"

PRODUCT CODE	DESCRIPTION
DR31836_-01-0000_	Drawer 3"H x 18"D x 36"W - Empty box with mat *
DR31836_-00-0000_	Drawer 3"H x 18"D x 36"W - Empty box
DR31836_-06-0203_	Drawer 3"H x 18"D x 36"W - 6 compartments
DR31836_-09-0206_	Drawer 3"H x 18"D x 36"W - 9 compartments
DR31836_-12-0209_	Drawer 3"H x 18"D x 36"W - 12 compartments
DR31836_-20-0415_	Drawer 3"H x 18"D x 36"W - 20 compartments
DR31836_-32-0724_	Drawer 3"H x 18"D x 36"W - 32 compartments
DR41836_-01-0000_	Drawer 4"H x 18"D x 36"W - Empty box with mat *
DR41836_-00-0000_	Drawer 4"H x 18"D x 36"W - Empty box
DR41836_-06-0203_	Drawer 4"H x 18"D x 36"W - 6 compartments
DR41836_-09-0206_	Drawer 4"H x 18"D x 36"W - 9 compartments
DR41836_-12-0209_	Drawer 4"H x 18"D x 36"W - 12 compartments
DR41836_-20-0415_	Drawer 4"H x 18"D x 36"W - 20 compartments
DR41836_-32-0724_	Drawer 4"H x 18"D x 36"W - 32 compartments
DR51836_-01-0000_	Drawer 5"H x 18"D x 36"W - Empty box with mat *
DR51836_-00-0000_	Drawer 5"H x 18"D x 36"W - Empty box
DR51836_-06-0203_	Drawer 5"H x 18"D x 36"W - 6 compartments
DR51836_-09-0206_	Drawer 5"H x 18"D x 36"W - 9 compartments
DR51836_-12-0209_	Drawer 5"H x 18"D x 36"W - 12 compartments
DR61836_-01-0000_	Drawer 6"H x 18"D x 36"W - Empty box with mat *
DR61836_-00-0000_	Drawer 6"H x 18"D x 36"W - Empty box
DR61836_-06-0203_	Drawer 6"H x 18"D x 36"W - 6 compartments
DR61836_-09-0206_	Drawer 6"H x 18"D x 36"W - 9 compartments
DR61836_-12-0209_	Drawer 6"H x 18"D x 36"W - 12 compartments
DR81836_-01-0000_	Drawer 8"H x 18"D x 36"W - Empty box with mat *
DR81836_-00-0000_	Drawer 8"H x 18"D x 36"W - Empty box
DR81836_-06-0203_	Drawer 8"H x 18"D x 36"W - 6 compartments
DR81836_-09-0206_	Drawer 8"H x 18"D x 36"W - 9 compartments
DR81836_-12-0209_	Drawer 8"H x 18"D x 36"W - 12 compartments
DR101836_-01-0000_	Drawer 10"H x 18"D x 36"W - Empty box with mat *
DR101836_-00-0000_	Drawer 10"H x 18"D x 36"W - Empty box
DR101836_-06-0203_	Drawer 10"H x 18"D x 36"W - 6 compartments
DR101836_-09-0206_	Drawer 10"H x 18"D x 36"W - 9 compartments
DR121836_-01-0000_	Drawer 12"H x 18"D x 36"W - Empty box with mat *
DR121836_-00-0000_	Drawer 12"H x 18"D x 36"W - Empty box
DR121836_-06-0203_	Drawer 12"H x 18"D x 36"W - 6 compartments
DR121836_-09-0206_	Drawer 12"H x 18"D x 36"W - 9 compartments



The product code is : **DR101836_-00-0000_**
(Drawer 10"H x 18"D x 36"W – Empty box)



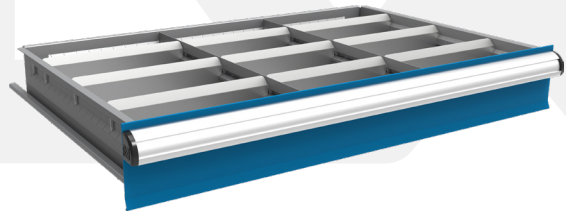
The product code is : **DR121836-09-0206_**
(Drawer 12"H x 18"D x 36"W - 9 compartments)

* The mat is a made of a thick rubber that provides protection for your products

/ Integrated Modular Drawer

/ 24" x 36"

PRODUCT CODE	DESCRIPTION
DR32436_-01-0000_	Drawer 3"H x 24"D x 36"W - Empty box with mat *
DR32436_-00-0000_	Drawer 3"H x 24"D x 36"W - Empty box
DR32436_-06-0203_	Drawer 3"H x 24"D x 36"W - 6 compartments
DR32436_-09-0206_	Drawer 3"H x 24"D x 36"W - 9 compartments
DR32436_-12-0209_	Drawer 3"H x 24"D x 36"W - 12 compartments
DR32436_-20-0415_	Drawer 3"H x 24"D x 36"W - 20 compartments
DR32436_-32-0724_	Drawer 3"H x 24"D x 36"W - 32 compartments
DR42436_-01-0000_	Drawer 4"H x 24"D x 36"W - Empty box with mat *
DR42436_-00-0000_	Drawer 4"H x 24"D x 36"W - Empty box
DR42436_-06-0203_	Drawer 4"H x 24"D x 36"W - 6 compartments
DR42436_-09-0206_	Drawer 4"H x 24"D x 36"W - 9 compartments
DR42436_-12-0209_	Drawer 4"H x 24"D x 36"W - 12 compartments
DR42436_-20-0415_	Drawer 4"H x 24"D x 36"W - 20 compartments
DR42436_-32-0724_	Drawer 4"H x 24"D x 36"W - 32 compartments
DR52436_-01-0000_	Drawer 5"H x 24"D x 36"W - Empty box with mat *
DR52436_-00-0000_	Drawer 5"H x 24"D x 36"W - Empty box
DR52436_-06-0203_	Drawer 5"H x 24"D x 36"W - 6 compartments
DR52436_-09-0206_	Drawer 5"H x 24"D x 36"W - 9 compartments
DR52436_-12-0209_	Drawer 5"H x 24"D x 36"W - 12 compartments
DR62436_-01-0000_	Drawer 6"H x 24"D x 36"W - Empty box with mat *
DR62436_-00-0000_	Drawer 6"H x 24"D x 36"W - Empty box
DR62436_-06-0203_	Drawer 6"H x 24"D x 36"W - 6 compartments
DR62436_-09-0206_	Drawer 6"H x 24"D x 36"W - 9 compartments
DR62436_-12-0209_	Drawer 6"H x 24"D x 36"W - 12 compartments
DR82436_-01-0000_	Drawer 8"H x 24"D x 36"W - Empty box with mat *
DR82436_-00-0000_	Drawer 8"H x 24"D x 36"W - Empty box
DR82436_-06-0203_	Drawer 8"H x 24"D x 36"W - 6 compartments
DR82436_-09-0206_	Drawer 8"H x 24"D x 36"W - 9 compartments
DR82436_-12-0209_	Drawer 8"H x 24"D x 36"W - 12 compartments
DR102436_-01-0000_	Drawer 10"H x 24"D x 36"W - Empty box with mat *
DR102436_-00-0000_	Drawer 10"H x 24"D x 36"W - Empty box
DR102436_-06-0203_	Drawer 10"H x 24"D x 36"W - 6 compartments
DR102436_-09-0206_	Drawer 10"H x 24"D x 36"W - 9 compartments
DR122436_-01-0000_	Drawer 12"H x 24"D x 36"W - Empty box with mat *
DR122436_-00-0000_	Drawer 12"H x 24"D x 36"W - Empty box
DR122436_-06-0203_	Drawer 12"H x 24"D x 36"W - 6 compartments
DR122436_-09-0206_	Drawer 12"H x 24"D x 36"W - 9 compartments



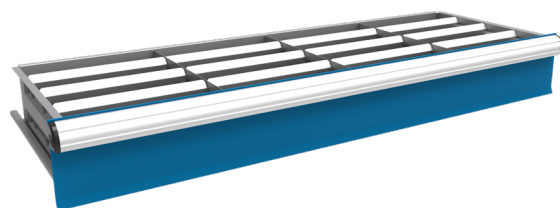
The product code is: **DR52436-12-0209_**
(Drawer 5"H x 24"D x 36"W - 12 compartments)

* The mat is a made of a thick rubber that provides protection for your products

30

/ Integrated Modular Drawer / 18" x 48"

PRODUCT CODE	DESCRIPTION
DR31848_-01-0000_	Drawer 3"H x 18"D x 48"W - Empty box with mat *
DR31848_-00-0000_	Drawer 3"H x 18"D x 48"W - Empty box
DR31848_-08-0304_	Drawer 3"H x 18"D x 48"W - 8 compartments
DR31848_-12-0308_	Drawer 3"H x 18"D x 48"W - 12 compartments
DR31848_-16-0312_	Drawer 3"H x 18"D x 48"W - 16 compartments
DR31848_-28-0621_	Drawer 3"H x 18"D x 48"W - 28 compartments
DR31848_-44-1033_	Drawer 3"H x 18"D x 48"W - 44 compartments
DR41848_-01-0000_	Drawer 4"H x 18"D x 48"W - Empty box with mat *
DR41848_-00-0000_	Drawer 4"H x 18"D x 48"W - Empty box
DR41848_-08-0304_	Drawer 4"H x 18"D x 48"W - 8 compartments
DR41848_-12-0308_	Drawer 4"H x 18"D x 48"W - 12 compartments
DR41848_-16-0312_	Drawer 4"H x 18"D x 48"W - 16 compartments
DR41848_-28-0621_	Drawer 4"H x 18"D x 48"W - 28 compartments
DR41848_-44-1033_	Drawer 4"H x 18"D x 48"W - 44 compartments
DR51848_-01-0000_	Drawer 5"H x 18"D x 48"W - Empty box with mat *
DR51848_-00-0000_	Drawer 5"H x 18"D x 48"W - Empty box
DR51848_-08-0304_	Drawer 5"H x 18"D x 48"W - 8 compartments
DR51848_-12-0308_	Drawer 5"H x 18"D x 48"W - 12 compartments
DR51848_-16-0312_	Drawer 5"H x 18"D x 48"W - 16 compartments
DR61848_-01-0000_	Drawer 6"H x 18"D x 48"W - Empty box with mat *
DR61848_-00-0000_	Drawer 6"H x 18"D x 48"W - Empty box
DR61848_-08-0304_	Drawer 6"H x 18"D x 48"W - 8 compartments
DR61848_-12-0308_	Drawer 6"H x 18"D x 48"W - 12 compartments
DR61848_-16-0312_	Drawer 6"H x 18"D x 48"W - 16 compartments
DR81848_-01-0000_	Drawer 8"H x 18"D x 48"W - Empty box with mat *
DR81848_-00-0000_	Drawer 8"H x 18"D x 48"W - Empty box
DR81848_-08-0304_	Drawer 8"H x 18"D x 48"W - 8 compartments
DR81848_-12-0308_	Drawer 8"H x 18"D x 48"W - 12 compartments
DR81848_-16-0312_	Drawer 8"H x 18"D x 48"W - 16 compartments
DR101848_-01-0000_	Drawer 10"H x 18"D x 48"W - Empty box with mat *
DR101848_-00-0000_	Drawer 10"H x 18"D x 48"W - Empty box
DR101848_-08-0304_	Drawer 10"H x 18"D x 48"W - 8 compartments
DR101848_-12-0308_	Drawer 10"H x 18"D x 48"W - 12 compartments
DR121848_-01-0000_	Drawer 12"H x 18"D x 48"W - Empty box with mat *
DR121848_-00-0000_	Drawer 12"H x 18"D x 48"W - Empty box
DR121848_-08-0304_	Drawer 12"H x 18"D x 48"W - 8 compartments
DR121848_-12-0308_	Drawer 12"H x 18"D x 48"W - 12 compartments



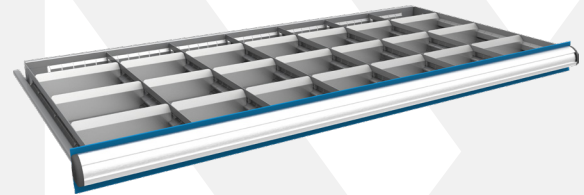
The product code is: **DR61848_-16-0312_**
(Drawer 6"H x 18"D x 48"W - 16 compartments)

* The mat is a made of a thick rubber that provides protection for your products

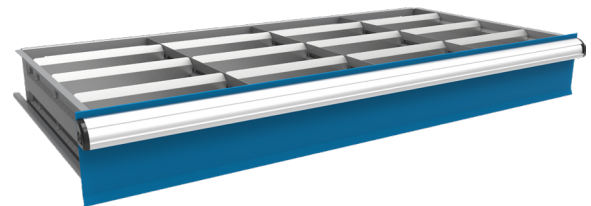
/ Integrated Modular Drawer

/ 24" x 48"

PRODUCT CODE	DESCRIPTION
DR32448_-01-0000_	Drawer 3"H x 24"D x 48"W - Empty box with mat *
DR32448_-00-0000_	Drawer 3"H x 24"D x 48"W - Empty box
DR32448_-08-0304_	Drawer 3"H x 24"D x 48"W - 8 compartments
DR32448_-12-0308_	Drawer 3"H x 24"D x 48"W - 12 compartments
DR32448_-16-0312_	Drawer 3"H x 24"D x 48"W - 16 compartments
DR32448_-28-0621_	Drawer 3"H x 24"D x 48"W - 28 compartments
DR32448_-44-1033_	Drawer 3"H x 24"D x 48"W - 44 compartments
DR42448_-01-0000_	Drawer 4"H x 24"D x 48"W - Empty box with mat *
DR42448_-00-0000_	Drawer 4"H x 24"D x 48"W - Empty box
DR42448_-08-0304_	Drawer 4"H x 24"D x 48"W - 8 compartments
DR42448_-12-0308_	Drawer 4"H x 24"D x 48"W - 12 compartments
DR42448_-16-0312_	Drawer 4"H x 24"D x 48"W - 16 compartments
DR42448_-28-0621_	Drawer 4"H x 24"D x 48"W - 28 compartments
DR42448_-44-1033_	Drawer 4"H x 24"D x 48"W - 44 compartments
DR52448_-01-0000_	Drawer 5"H x 24"D x 48"W - Empty box with mat *
DR52448_-00-0000_	Drawer 5"H x 24"D x 48"W - Empty box
DR52448_-08-0304_	Drawer 5"H x 24"D x 48"W - 8 compartments
DR52448_-12-0308_	Drawer 5"H x 24"D x 48"W - 12 compartments
DR52448_-16-0312_	Drawer 5"H x 24"D x 48"W - 16 compartments
DR62448_-01-0000_	Drawer 6"H x 24"D x 48"W - Empty box with mat *
DR62448_-00-0000_	Drawer 6"H x 24"D x 48"W - Empty box
DR62448_-08-0304_	Drawer 6"H x 24"D x 48"W - 8 compartments
DR62448_-12-0308_	Drawer 6"H x 24"D x 48"W - 12 compartments
DR62448_-16-0312_	Drawer 6"H x 24"D x 48"W - 16 compartments
DR82448_-01-0000_	Drawer 8"H x 24"D x 48"W - Empty box with mat *
DR82448_-00-0000_	Drawer 8"H x 24"D x 48"W - Empty box
DR82448_-08-0304_	Drawer 8"H x 24"D x 48"W - 8 compartments
DR82448_-12-0308_	Drawer 8"H x 24"D x 48"W - 12 compartments
DR82448_-16-0312_	Drawer 8"H x 24"D x 48"W - 16 compartments
DR102448_-01-0000_	Drawer 10"H x 24"D x 48"W - Empty box with mat *
DR102448_-00-0000_	Drawer 10"H x 24"D x 48"W - Empty box
DR102448_-08-0304_	Drawer 10"H x 24"D x 48"W - 8 compartments
DR102448_-12-0308_	Drawer 10"H x 24"D x 48"W - 12 compartments
DR122448_-01-0000_	Drawer 12"H x 24"D x 48"W - Empty box with mat *
DR122448_-00-0000_	Drawer 12"H x 24"D x 48"W - Empty box
DR122448_-08-0304_	Drawer 12"H x 24"D x 48"W - 8 compartments
DR122448_-12-0308_	Drawer 12"H x 24"D x 48"W - 12 compartments



The product code is: DR32448_-28-0621_
(Drawer 3"H x 24"D x 48"W - 28 compartments)



The product code is: DR62448_-16-0312_
(Drawer 6"H x 24"D x 48"W - 16 compartments)

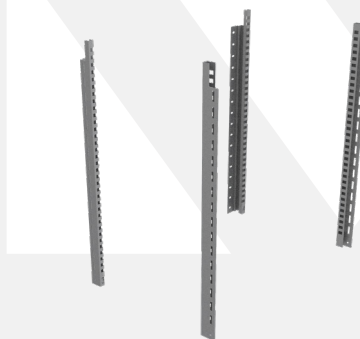
* The mat is a made of a thick rubber that provides protection for your products

32

/ Integrated Modular Drawer / Adaptors

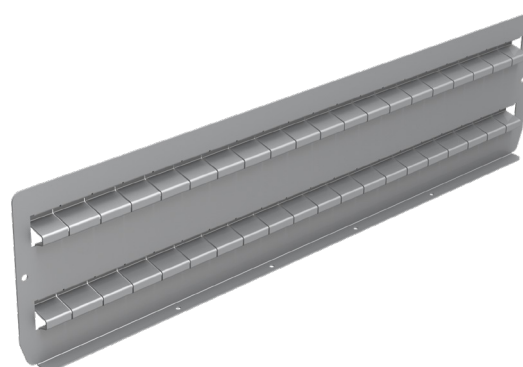
HEIGHT	PRODUCT CODE	DESCRIPTION
12"	INDA12_	Interlok drawer adaptors 12" kit
18"	INDA18_	Interlok drawer adaptors 18" kit
24"	INDA24_	Interlok drawer adaptors 24" kit
36"	INDA36_	Interlok drawer adaptors 36" kit
48"	INDA48_	Interlok drawer adaptors 48" kit

*Drawer adaptors compatible with E-Z Rect Type 1 and NAS 7000 are also available. Contact Metalware if adaptors for other shelving styles are needed.



/ Integrated Modular Drawer / Separators

DEPTH	PRODUCT CODE	DESCRIPTION
18"	DS318_	Drawer separator 3"H x 18"D
18"	DS418_	Drawer separator 4"H x 18"D
18"	DS518	Drawer separator 5"H x 18"D
18"	DS618_	Drawer separator 6"H x 18"D
18"	DS818_	Drawer separator 8"H x 18"D
18"	DS1018_	Drawer separator 10"H x 18"D
18"	DS1218_	Drawer separator 12"H x 18"D
24"	DS324_	Drawer separator 3"H x 24"D
24"	DS424_	Drawer separator 4"H x 24"D
24"	DS524_	Drawer separator 5"H x 24"D
24"	DS624_	Drawer separator 6"H x 24"D
24"	DS824_	Drawer separator 8"H x 24"D
24"	DS1024_	Drawer separator 10"H x 24"D
24"	DS1224_	Drawer separator 12"H x 24"D



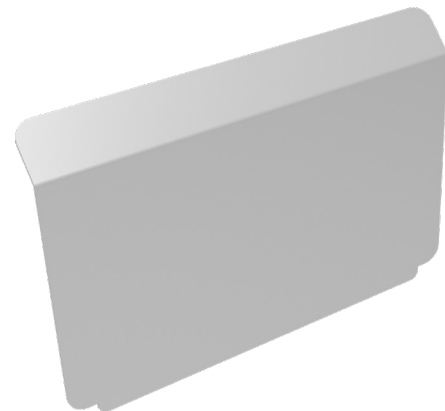
/ Integrated Modular Drawer / Drop-In Dividers

HEIGHT	WIDTH	PRODUCT CODE	DESCRIPTION
3"	3"	DD33	Drawer divider 3"H x 3"W
3"	4"	DD34	Drawer divider 3"H x 4"W
3"	5"	DD35	Drawer divider 3"H x 5"W
3"	6"	DD36	Drawer divider 3"H x 6"W
3"	7"	DD37	Drawer divider 3"H x 7"W
3"	8"	DD38	Drawer divider 3"H x 8"W
3"	9"	DD39	Drawer divider 3"H x 9"W
3"	10"	DD310	Drawer divider 3"H x 10"W
3"	11"	DD311	Drawer divider 3"H x 11"W
3"	12"	DD312	Drawer divider 3"H x 12"W
4"	3"	DD43	Drawer divider 4"H x 3"W
4"	4"	DD44	Drawer divider 4"H x 4"W
4"	5"	DD45	Drawer divider 4"H x 5"W
4"	6"	DD46	Drawer divider 4"H x 6"W
4"	7"	DD47	Drawer divider 4"H x 7"W
4"	8"	DD48	Drawer divider 4"H x 8"W
4"	9"	DD49	Drawer divider 4"H x 9"W
4"	10"	DD410	Drawer divider 4"H x 10"W
4"	11"	DD411	Drawer divider 4"H x 11"W
4"	12"	DD412	Drawer divider 4"H x 12"W
5"	3"	DD53	Drawer divider 5"H x 3"W
5"	4"	DD54	Drawer divider 5"H x 4"W
5"	5"	DD55	Drawer divider 5"H x 5"W
5"	6"	DD56	Drawer divider 5"H x 6"W
5"	7"	DD57	Drawer divider 5"H x 7"W
5"	8"	DD58	Drawer divider 5"H x 8"W
5"	9"	DD59	Drawer divider 5"H x 9"W
5"	10"	DD510	Drawer divider 5"H x 10"W
5"	11"	DD511	Drawer divider 5"H x 11"W
5"	12"	DD512	Drawer divider 5"H x 12"W

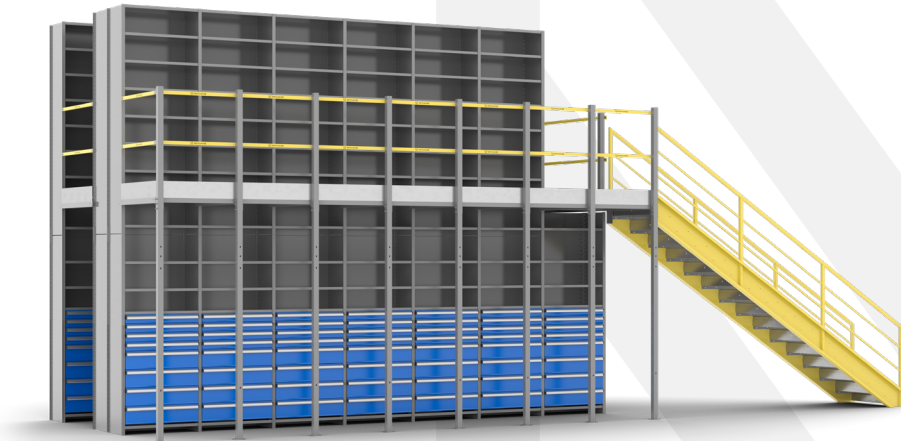


/ Integrated Modular Drawer / Drop-In Dividers

HEIGHT	WIDTH	PRODUCT CODE	DESCRIPTION
6"	4"	DD64	Drawer divider 6"H x 4"W
6"	5"	DD65	Drawer divider 6"H x 5"W
6"	6"	DD66	Drawer divider 6"H x 6"W
6"	7"	DD67	Drawer divider 6"H x 7"W
6"	8"	DD68	Drawer divider 6"H x 8"W
6"	9"	DD69	Drawer divider 6"H x 9"W
6"	10"	DD610	Drawer divider 6"H x 10"W
6"	11"	DD611	Drawer divider 6"H x 11"W
6"	12"	DD612	Drawer divider 6"H x 12"W
8"	6"	DD86	Drawer divider 8"H x 6"W
8"	7"	DD87	Drawer divider 8"H x 7"W
8"	8"	DD88	Drawer divider 8"H x 8"W
8"	9"	DD89	Drawer divider 8"H x 9"W
8"	10"	DD810	Drawer divider 8"H x 10"W
8"	11"	DD811	Drawer divider 8"H x 11"W
8"	12"	DD812	Drawer divider 8"H x 12"W
10"	8"	DD108	Drawer divider 10"H x 8"W
10"	9"	DD109	Drawer divider 10"H x 9"W
10"	10"	DD1010	Drawer divider 10"H x 10"W
10"	11"	DD1011	Drawer divider 10"H x 11"W
10"	12"	DD1012	Drawer divider 10"H x 12"W
12"	8"	DD128	Drawer divider 12"H x 8"W
12"	9"	DD129	Drawer divider 12"H x 9"W
12"	10"	DD1210	Drawer divider 12"H x 10"W
12"	11"	DD1211	Drawer divider 12"H x 11"W
12"	12"	DD1212	Drawer divider 12"H x 12"W



/ Multi-Level & High-Bay Solutions



/ Features

1. Built with Interlok or E-Series Widespan to best suit requirements
2. Structural components designed and manufactured by Metalware
3. These components can support and integrate with other systems (eg. conveyors)
4. Staircases, handrails, pivot gates, sliding gates and more are made by Metalware and are shipped together for a seamless delivery and installation process
5. Take advantage of all other Metalware accessories and components
6. Plan for the future with our Technical Departments; begin with 1 level and expand to a 2nd or even 3rd level

36

/ Made with Interlok *



With the Interlok shelving system, grow vertically up to 30' and include Metalware staircases, guardrails, pivot gates, sliding gates and more.

* Contact the Metalware Technical Department for assistance regarding technical information required for permits.

/ Made with E-Series Widespan *



Optimize a large warehouse space with the E-Series Widespan shelving system.

* Contact the Metalware Technical Department for assistance regarding technical information required for permits.

38

/ Products for Multi-Level & High-Bay Systems

Metalware's factory-made structural components will help complete your multi-level or high-bay project.

Prices available upon request

Stairs



Handrails

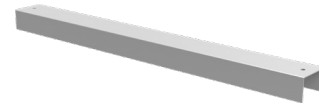


Multi-level system components (pivot safety gate, sliding gate, columns, etc.)



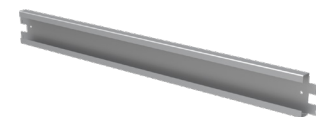
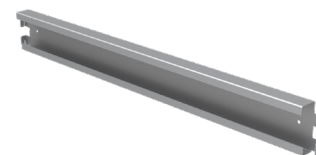
COMPONENTS FOR MULTI-TIER & HIGH-RISE SYSTEMS - INTERLOK

	WEIGHT (LBS)	CODE
Mezzanine floor channel 30" galvanized	7.25	MFC30
Mezzanine floor channel 36" galvanized	8.45	MFC36
Mezzanine floor channel 42" galvanized	9.90	MFC42
Mezzanine floor channel 45" galvanized	10.50	MFC45
Mezzanine floor channel 48" galvanized	11.10	MFC48
Mezzanine cross aisle channel 36" galvanized	5.5	MCC36
Mezzanine cross aisle channel 42" galvanized	6.35	MCC42
Mezzanine cross aisle channel 48" galvanized	7.3	MCC48
Mezzanine cross aisle channel 54" galvanized	8.25	MCC54
Mezzanine cross aisle channel 60" galvanized	9.7	MCC60



COMPONENTS FOR MULTI-TIER & HIGH-RISE SYSTEMS - E-SERIES WIDESPAN

	WEIGHT (LBS)	CODE
Mezzanine floor channel 36"	7.20	WS-MFC36
Mezzanine floor channel 42"	8.50	WS-MFC42L
Mezzanine floor channel 48"	9.70	WS-MFC48L
Mezzanine cross channel 36"	7.20	WS-MCC36L
Mezzanine cross channel 42"	8.50	WS-MCC42L
Mezzanine cross channel 48"	9.70	WS-MCC48L



Hardware included

/ Slotted Angle Bolted Shelving

The Slotted Angle Bolted Shelving is an economical storage solution. Available with braces, gussets or panels, the two different types of posts can be cut and bolted into a variety of shapes (workbenches, shelves, tables, etc.) and can also be used as a top tie with our Widespan and Interlock product lines. It is best suited for use in homes or small offices.

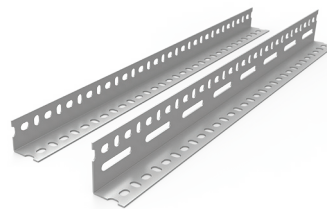


Features



Galvanized Steel Shelves

Ideal for temperature sensitive environments.



Slotted Angle Posts

2 different post profiles for varying weight capacities.



Gussets

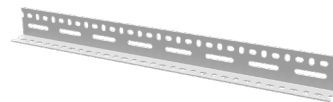
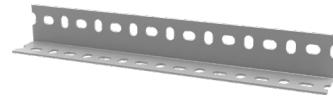


Nuts and Bolts

20GA GALVANIZED SHELVES	WEIGHT (LBS)	CODE
12" deep x 24" wide	5.00	GS1224
12" deep x 36" wide	7.00	GS1236
12" deep x 48" wide	9.00	GS1248
12" deep x 60" wide	13.00	GS1260
15" deep x 36" wide	8.00	GS1536
15" deep x 48" wide	11.00	GS1548
16" deep x 42" wide	11.00	GS1642
18" deep x 36" wide	10.00	GS1836
18" deep x 48" wide	13.00	GS1848
18" deep x 60" wide	17.00	GS1860
24" deep x 24" wide	8.00	GS2424
24" deep x 36" wide	12.00	GS2436
24" deep x 48" wide	18.00	GS2448
24" deep x 60" wide	21.00	GS2460
28" deep x 36" wide	14.00	GS2836
28" deep x 48" wide	20.00	GS2848
32" deep x 42" wide	22.00	GS3242



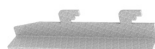
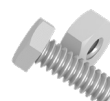
PERFORATED ANGLE	CODE
Perforated angle, galvanized TYPE 125 1 - 3/8" x 1 - 3/8" *	GPXX125 (ex: GP72125 for 72" angle)
Perforated angle, galvanized TYPE 225 1 - 1/2" x 2 - 1/4" *	GPXX225 (ex: GP72225 for 72" angle)



* Available in 6', 7', 8', 9', 10', 12'

** Production available in bundles of 100 pieces only

HARDWARE	CODE
Gussets 3" x 3"	GCG
Nuts & bolts 5/16" x 1"	GNB
Galvanized shelf clip	GSC



HARDWARE	CODE
Bracing for 33" shelves	GSB33
Bracing for 51" shelves	GSB51



/ Color Options Available *

METALWARE COLOR CHART					
Products	Light gray (L) **	Red (R) **	Classic Blue (S) **	Yellow (Y) ***	Custom
Interlok	Standard (L)				Available *
E-Series Widespan	Standard (L)				Available *
Integrated Modular Drawers (drawer fronts only)	Available at no charge	Available at no charge	Standard (S)		Available *
Stair handrails, guardrails, pivot gates ...				Available and recommended (Y)	

* For large projects that require custom colors, contact Metalware (See Terms & Conditions). Custom paint with special features such as anti-microbial can also be considered

** The color codes L, R, S or Y should be placed at the end of the product code to specify the correct color

*** Available and recommended for stair handrails, guardrails, pivot gates...

/ Metalware Color Guide



Light gray (L)



Red (R)



Classic Blue (S)



Yellow (Y)

/ Metalware: Terms & Conditions

Please read these Terms & Conditions carefully. Metalware Corporation Inc. reserves the right to revise all terms and conditions. Should you have any questions or concerns, please contact your Metalware Sales Representative.

PRICE

Prices listed are suggested retail pricing and valid for authorized distributors only. Call the Sales Department to ask for your discount or email info@metalware.ca for a personalized quote. Metalware encourages requests. Made-to-measure quotes for projects above 25,000\$ (list) require coordinated delivery or engineering approval. Prices are subject to change without notice. Please ensure you are working with a current price list. N.B. Standard quotes are valid for 30 days. Please contact your Sales Representative if your project requires extended terms.

PAINT COLOURS

No charge for standard colours on the Metalware colour chart. For special colours, a minimum of 300\$ net can be expected for approved quotes below 10,000\$ (list).

TERMS 30

Net 30 Days - Or as per written agreement. If there is a deficiency with the product or a portion of the order is missing, email customer.service@metalware.ca immediately to ensure that Metalware registers and corrects the problem. A surcharge of 2% per month will be applied to late payments.

Products are invoiced on the shipping date, or on the day the order is completed and ready to ship. Shipping cannot be delayed by more than 5 working days. After 5 working days, orders will be stored in a warehouse at a reasonable rate plus handling charges, at the buyer's expense, until shipment is requested. Clients can expect to pay 50\$ per pallet per week between storage and handling unless another written agreement has been organized.

Payment Address

Metalware Corporation Inc.,
Accounts Receivable
5735 Place Turcot
Montréal, QC H4C 1V9
Canada

Payment Methods

Payments can be made via check or electronic bank wire transfer.

PRODUCTION & DELIVERY DATE

Orders are only entered into production when a purchase order reflects the quote or standard price offered. Further requirements before entering an order may include paint colors, approved layouts and delivery information. Please ensure delivery information includes information such as special requirements, carrier information, contact person phone number and email. All missing information will require internal sales to re-evaluate and re-submit a quote to ensure a valid purchase order is sent to customer.service@metalware.ca. Please avoid delays caused by these types of changes by requesting an updated quote before submitting the purchase order.

You will receive an order acknowledgment in 1 to 2 working days. If you do not receive an order acknowledgement, please contact customer.service@metalware.ca as soon as possible. Orders cannot be changed or cancelled once they have been put into production. Please ensure that a minimum notice of 3 weeks is sent and received by customer.service@metalware.ca if production must be delayed.

RETURNS

No returns will be accepted on any Metalware products. Contact Metalware for written approval if an exception to this rule should be considered.

SHORTAGES AND DAMAGES

All products are carefully packed before shipment. Upon reception, receive should open packages immediately. If damages are found or parts are missing, they must be indicated on the receipt before the carrier leaves, on the freight company's copy. Written claims must be made immediately. Please provide photos. Also note that carriers require claims for damages or shortages be filed only by the carrier's direct client.

FREIGHT POLICY

Metalware cannot promise the exact time of delivery. Any freight surcharges resulting from late deliveries are not the responsibility of Metalware.

PRODUCT DEVELOPMENT

When Metalware develops a specialized solution for any given project, the specifications and drawings generated are not to be shared without prior consent. Warranties

All products produced by Metalware are backed by a five (5) year limited warranty against manufacturer's defects. The warranty is non-transferable and only covers the parts themselves. Drawer slides carry a limited lifetime warranty directly with Fulterer (slide manufacturer). Metalware is not responsible for any cost related to or caused by possibly defective parts or incorrect installation. A solution to parts covered by the warranty will be offered FOB the Metalware production facility.



METALWARE

5735 Place Turcot, Montréal, QC H4C 1V9

Toll Free: 1-833-937-9533

info@metalware.ca

www.metalware.ca