



METALWARE

Raising the standard for industrial shelving since 1954



Introducing the Interlok “No Bolt” Shelving System

Made in Canada - Designed and manufactured by METALWARE

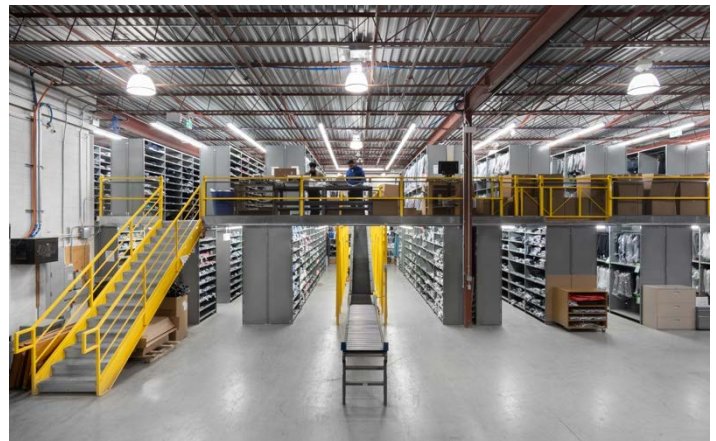
Metalware’s versatile Interlok “No Bolt” Shelving System is designed and manufactured with capacity, strength and flexibility in mind.

/ Benefits of Interlok shelving

- ✓ Lateral and vertical expansions (up to 30’ high) using 16 Ga T-Posts capable of being spliced
- ✓ The right size shelf is available up to 4’ wide and 3’ deep
- ✓ Strong, durable and flexible using 20 Ga welded, box structure shelves
- ✓ Reduces labor costs and time to install or reconfigure by using shelf clips
- ✓ Can be customized with a variety of components and accessories, including drawers



Interlok shelving in a distribution center for tools and hardware products.



Multi-level system using Interlok shelving customized for conveyors in an apparel manufacturing warehouse.

Call your local METALWARE Representative toll free at 1-833-937-9533
or email info@metalware.ca.



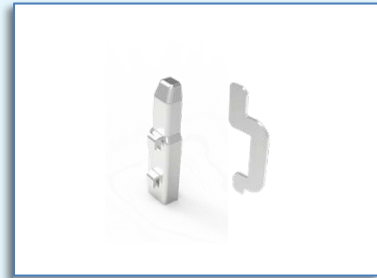
/ Interlok - Features



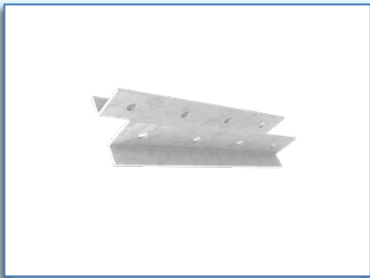
T-POST



20 GA WELDED BOX SHELF



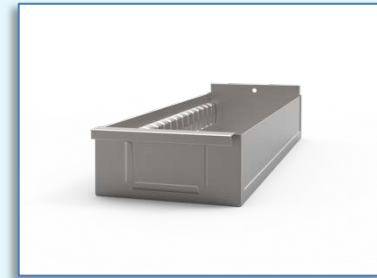
1" AND 2" SHELF CLIPS



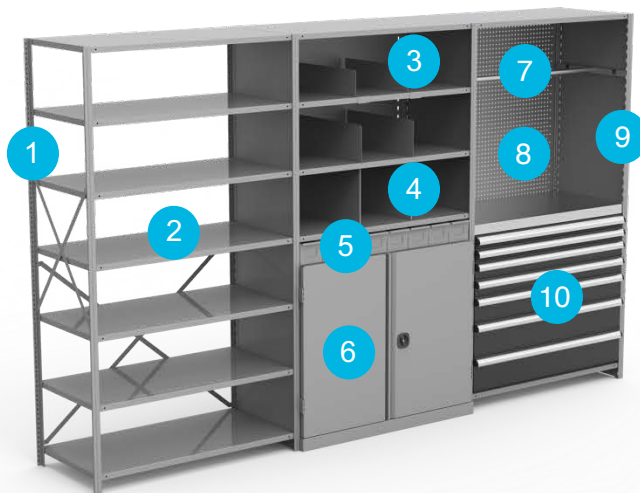
SPLICE BRACKET



END PANEL WITH WELDED T-POST



SHELF BOX



1. 16 Ga T-post
2. 20 Ga welded box shelves, adjustable at 1" increments
3. Sliding divider
4. Divider
5. Shelf box
6. Swinging doors
7. Hanging bar
8. Perforated back panel
9. End panel with welded T-posts
10. Drawers

Call your local METALWARE Representative toll free at 1-833-937-9533
or email info@metalware.ca.



METALWARE

Raising the standard for industrial shelving since 1954



Check out **METALWARE's** Interlok video [here](#). The different ways you can optimize your client's warehouse space are endless.

/ Interlok shelves and more by METALWARE

Complete your next storage proposal with a full line of options **designed and manufactured by METALWARE**. Visit www.metalwareshelving.com and always count on:

- Fast response time
- A team that cares about your project
- Detailed proposals
- Durable quality



Our promise to you

- Strength
- Support
- Integrity

/ METAL THAT WORKS

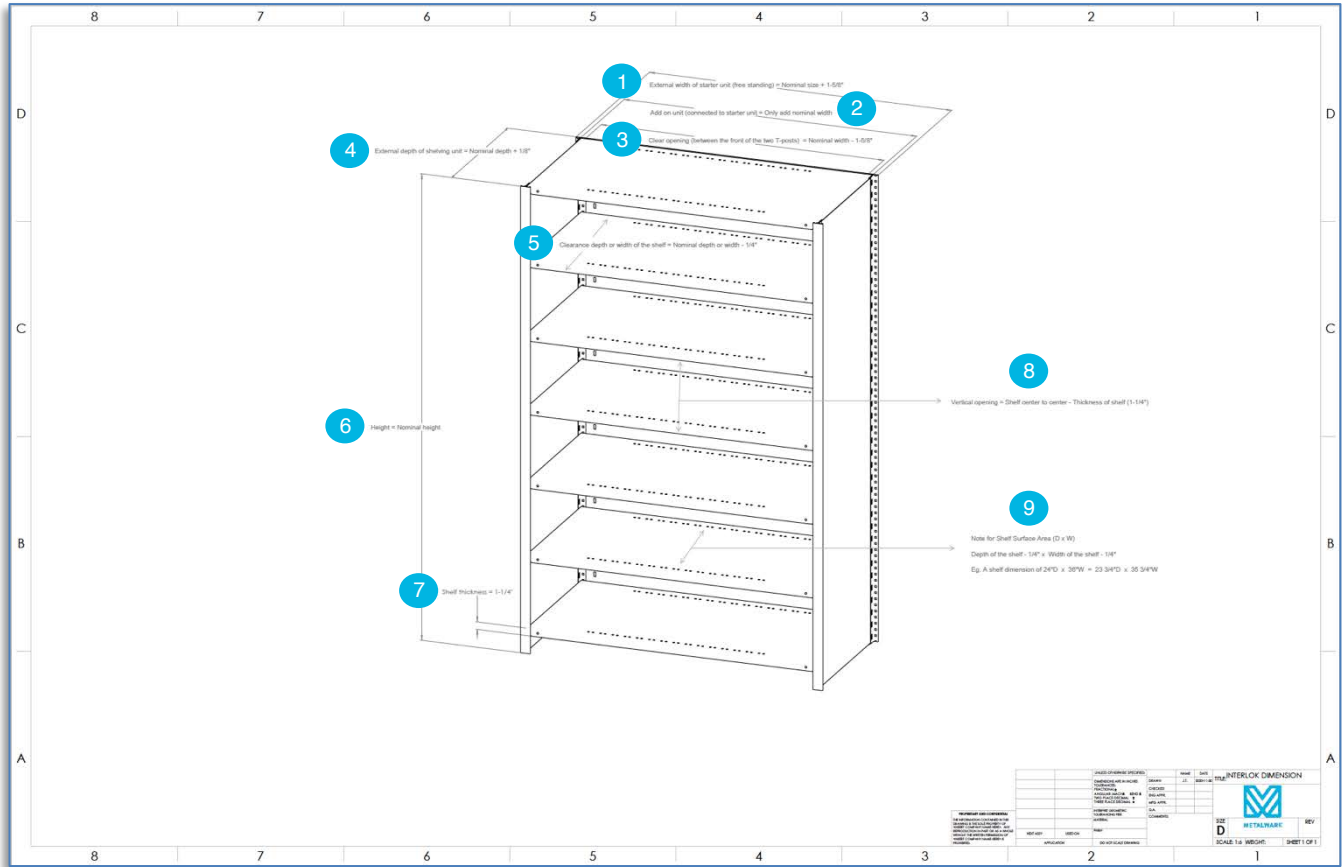
Think **METALWARE** and find the space-saving solution your clients need!

Call us toll free at **1-833-937-9533** or send an email to info@metalware.ca for more information. Visit www.metalwareshelving.com to access any marketing material required for your next proposal.

Call your local **METALWARE** Representative toll free at 1-833-937-9533
or email info@metalware.ca.



/ Interlok Nominal Dimensions & Clearances



1	External width of starter unit (free standing) = Nominal size + $1\frac{5}{8}$ "
2	Add on unit (connected to starter unit) = Only add nominal width
3	Clear opening (between the front of the two T-posts) = Nominal width - $1\frac{5}{8}$ "
4	External depth of shelving unit = Nominal depth + $\frac{1}{8}$ "
5	Clearance depth or width of the shelf = Nominal depth or width - $\frac{1}{4}$ "
6	Height = Nominal height
7	Shelf thickness = $1\frac{1}{4}$ "
8	Vertical opening = Shelf center to center - Thickness of shelf ($1\frac{1}{4}$ "
9	Note for Shelf Surface Area (D X W): Depth of shelf - $\frac{1}{4}$ " X Width of shelf - $\frac{1}{4}$ " Eg. A shelf dimension of 24"D X 36"W = $23\frac{3}{4}$ " X $35\frac{3}{4}$ "

**Call your local METALWARE Representative toll free at 1-833-937-9533
or email info@metalware.ca.**



INTERLOK STANDARD SIZE CHART

Interlok Shelving Size Chart

Capacity can be affected by unit configuration.

Other dimensions available upon request.

Uniformly distributed load in lbs.
"X" - custom configuration, only available upon request.

	30"	36"	42"	48"
12"	600	800	650	550
15"	600	800	650	550
16"	x	x	650	x
18"	600	800	650	550
24"	600	800	650	450
30"	x	650	450	350
32"	x	x	450	x
36"	x	x	x	350

INTERLOK STANDARD POST SIZE CHART

POSTS	STEEL GAUGE
3'4" high	16 gauge
4'4" high	16 gauge
5'4" high	16 gauge
6'4" high	16 gauge
7'4" high	16 gauge
8'4" high	16 gauge
9'4" high	16 gauge
10'4" high	16 gauge
11'4" high *	16 gauge
12'4" high *	16 gauge



Call your local METALWARE Representative toll free at 1-833-937-9533
or email info@metalware.ca.